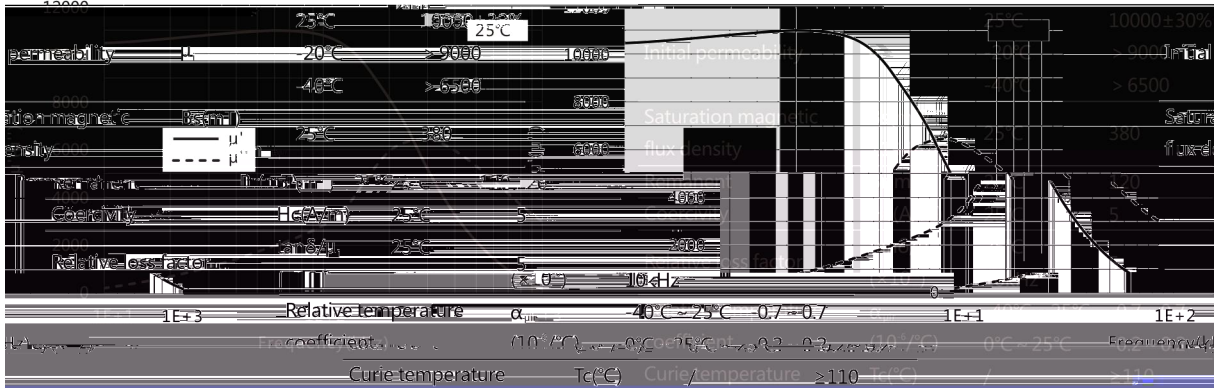
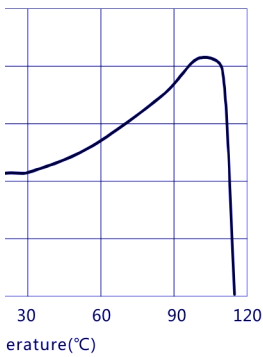


**$\mu'$  ( $\mu''$ )-Frequency**

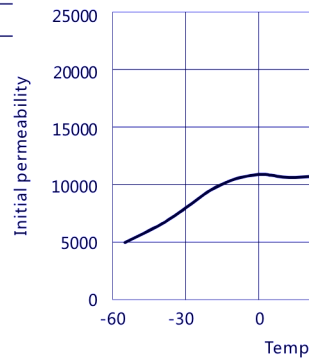


**Temperature**

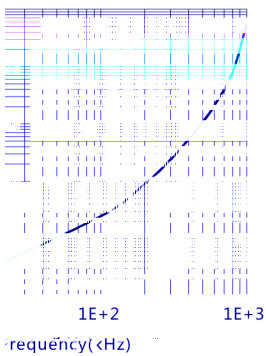


Electrical resistivity	$\rho(\Omega\cdot m)$	/	0.1
Density	$d(kg/m^3)$	/	$4.95 \times 10^3$
Test core : Toroid(mm)			
OD : 25			
ID : 15			
H : 7.5			

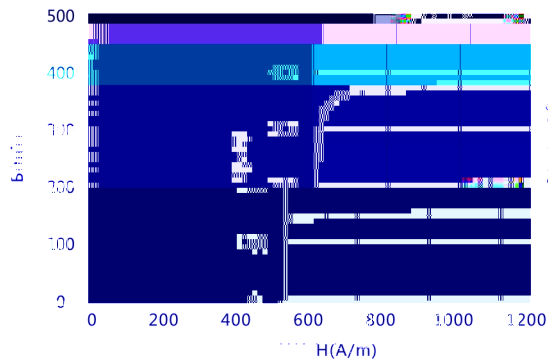
**$\mu_i$ -Temp**



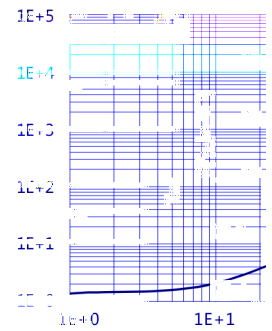
**$\mu_i$ -Frequency**



**B-H**



**$\tan\delta/\mu$**



**Z-Frequency**

N=10TS,  $\Phi$  0.35mm, T=25°C



**Bs-Temperature**

H=1194A/m

